

Press release

Innovative new products for heroal roller shutter systems

System updates for greater functionality, efficiency, design and economy

Verl, July 2025. heroal roller shutter systems provide customised solutions for every installation situation. They are perfect for economical projects that place the highest demands on quality, functionality, design and flexibility. Thanks to its continuous system extensions, heroal offers a forward-looking portfolio that supports efficient planning and manufacturing processes as well as maximum design freedom. The heroal RS 37 SW and heroal RS 52 SW slim-winding roller shutter slats, the heroal DRP driving rain-proof guide rails, the two-piece heroal DRP guide rails as well as the new platform for angled end slats help heroal partners flexibly implement demanding projects.

For small roller shutter boxes: heroal RS 37 SW and RS 52 SW slim-winding roller shutter slats

To make optimal use of the winding space and to provide the best possible functionality, heroal has expanded its portfolio with the RS 37 SW and heroal RS 52 SW slim-winding roller shutter slats. The perfect combination of slat height and nominal thickness makes them ideal for use in small roller shutter boxes. This enables compact, visually discreet solutions at reduced costs. While the heroal RS 37 SW is ideal for installation in the front-mounted box, the heroal RS 52 SW roller shutter slat is primarily used in top-mounted box systems. Both roller shutter slats can be flexibly integrated in all box systems. Their optimised hook and pocket geometry makes the roller shutter slat more stable and prevents light transmission when closed.

heroal DRP driving rain-proof guide rails – flexible combination

As a driving rain-proof guide rail platform, heroal DRP (Driving Rain Proof) can be flexibly used for a range of building requirements. The tightness against driving rain is certified up to 600 Pa. They are installed on the window system's panel frame. The distance between the heroal DRP guide rails and the window is easy and extremely efficient to adjust. Besides the standard variants, additional variants for a distance of 20 mm or 40 mm as well as 10-mm profiles for variable extension are available. In addition, a version for combining a mini

roller shutter system with integrated insect screen can be used for a wide range of applications.

Efficient, reliable installation with the two-piece heroal DRP guide rails

The two-piece heroal DRP guide rails are available in the HTF (26 mm guide rail depth) and HTF 40 (40 mm guide rail) variants. They consist of a basic profile with clip-on cover profile and can be installed on the wall (without the requirement for tightness against driving rain) as well as on the panel frame. The screw connection within the basic profile means that no screws are visible. The cover profile suitable for both basic profiles is symmetrically attached and can be reliably clipped into place. The two-piece guide rails are driving rain-proof, compatible with current panel caps as well as box systems and support easy, efficient maintenance access thanks to its two-piece design.

New platform for angled end slats for exceptionally easy installation

The new platform for angled end slats makes high-quality installation with a flush roller shutter finish particularly easy. The end slats manufactured from extruded aluminium are suitable for clockwise and counterclockwise roller application in top-mounted and front-mounted boxes. The two-piece version of the angled end slats offers fitters the benefits of maintenance inspection as well as the greatest possible use of standard parts. The angled profiles can be used for the mini as well as maxi version. Flexibility is provided by a long (31 mm) and short (11 mm) angle variant. The end slat guides ensure a clean run in the guide rail. They are suitable for all guides with a depth of up to 26 mm and are available for the mini as well as the maxi version.

The heroal system offer is complemented by two solar motors as well as the heroal FMC (front mounted combination) panel box system. The Kaiser Nienhaus Easyline Solar and Somfy RS 100 Solar io solar motors allow heroal roller shutter systems to be installed without an external power supply for optimised processes and also enable particularly energy-efficient operation. The heroal FMC panel box system is suitable for applications with a visible front extruded panel and was developed by heroal with a focus on particularly economical implementation.

Flexibility and economy: heroal finished roller shutter curtains

For maximum flexibility, rapid availability as well as easy, time-saving manufacturing, heroal roller shutter slats are available as prefabricated finished roller shutter curtains comprised of a slat system and end slat. The expansion of the roller shutter portfolio has also led to a greater selection of roller shutter slat systems and end slats in the finished curtain portfolio, while the colour concept has also been revised. The new heroal RS 37 SW and heroal RS 52 SW slim-winding roller shutters are also available as a heroal finished curtain. The configuration options have been optimised as well: The new angled end slats will be added to the portfolio and additional accessories, such as quick connectors, steel strip mountings and end slat accessories can be individually configured. heroal offers a wide range of design options with a new colour concept in the Basic, Trend and Exclusive categories. Basic colours are classic shades that are available quickly, while Trend colours expand the standard range and Exclusive colours offer the greatest variety of colours. The ordering process is particularly efficient thanks to the easy and convenient heroal Business configurator.

Images



[heroal 17.1 New products VP A+B_RS 37_A5]

Thanks to the new updates for heroal roller shutter systems, heroal offers a forward-looking portfolio that supports efficient planning and manufacturing processes as well as maximum design freedom. © heroal



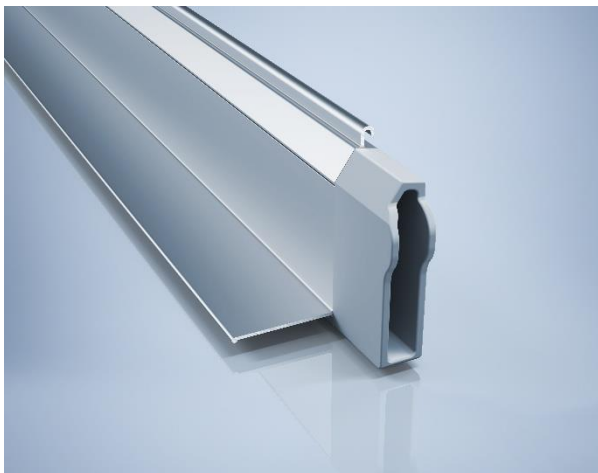
[R5270 00_web] - RS 52 SW

To make optimal use of the winding space and to provide the best possible functionality, heroal has expanded its portfolio with the RS 37 SW and heroal RS 52 SW slim-winding roller shutter slats. © heroal



[R5274 00_web]

The two-piece heroal DRP guide rails consist of a basic profile with clip-on cover profile and enable efficient and reliable installation. The screw connection within the profile means that no screws are visible. © heroal



[R5272 00_web]

The new platform for angled end slats makes high-quality installation with a flush roller shutter finish particularly easy. The end slats are suitable for clockwise and counterclockwise roller application in top-mounted and front-mounted boxes. © heroal



[R5280 00_web] - Finished curtain locked with RS 37 SW

For maximum flexibility, rapid availability as well as easy, time-saving manufacturing, heroal roller shutter slats are available as prefabricated finished roller shutter curtains comprised of a slat system and end slat. © heroal

heroal - the aluminium systems supplier

heroal is one of the international market leaders in the manufacture of aluminium system solutions for roller shutters, sun protection, roller doors, windows, doors, sliding doors, curtain walls and patio roofs. The family-run company was founded in 1874 and has around 900 employees at its head office in Verl, Germany, as well as sites in France, the Netherlands and the Czech Republic and is involved in the construction of sustainable residential and commercial buildings worldwide. For heroal, the focus is on innovative and high-quality complete solutions for fabricators, architects, planners, investors and builders, which are characterised by first-class quality, industry-leading customisation options and consultancy and services at every phase of the building life cycle. heroal systems are developed and manufactured in Germany.

Additional information is available at www.heroal.de.

heroal – Johann Henkenjohann GmbH & Co. KG

Österwieher Straße 80
33415 Verl (Germany)

Press contact:

Kemper Kommunikation
Kirsten Kemper
Am Milchbornbach 10
51429 Bergisch Gladbach (Germany)
Tel.: +49 2204 9644808
Email: info@kemper-kommunikation.de

Social media:

Facebook: <https://www.facebook.com/heroal.Deutschland>
<https://www.facebook.com/heroal.international>
Instagram: <https://www.instagram.com/heroal>
Pinterest: <https://www.pinterest.de/heroalJohannHenkenjohann>
YouTube: <https://www.youtube.com/user/heroalVerl>
LinkedIn: <https://www.linkedin.com/company/heroal---johann-henkenjohann-gmbh-&-co.-kg>
XING: <https://www.xing.com/pages/heroal>

